

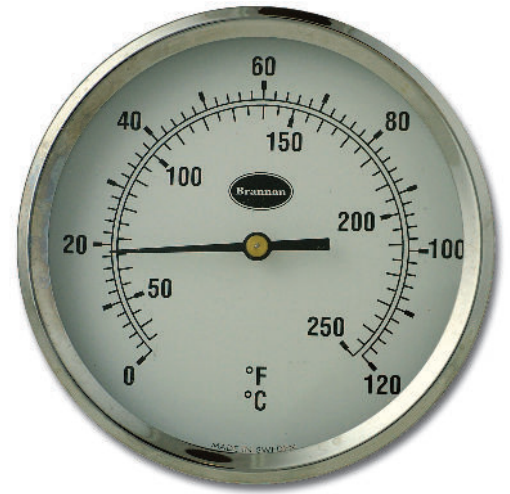
## 100mm Dial Thermometer - Direct Mounting - Back Entry, 100mm Stem

### Applications

- Heating, ventilation, air-conditioning
- Hot water
- Light industrial

### Standard Product Specifications

<b>Design:</b>	BS EN 13190
<b>Accuracy Class:</b>	2
<b>Case:</b>	100mm, black steel with Chrome Bezel
<b>Connection:</b>	Push fit, back entry
<b>Stem Diameter:</b>	9mm
<b>Stem Lengths:</b>	100mm
<b>Pocket:</b>	1/2" BSP brass
<b>Window:</b>	PMMA
<b>Pointer:</b>	Black plastic
<b>Ranges:</b>	-20 to 60°C&F 0 to 120°C&F 0 to 160°C&F
<b>Operating Temperature:</b>	-40 to +80°C
<b>Storage Temperature:</b>	-40 to +60°C
<b>Temperature Element:</b>	Bimetal
<b>Protection:</b>	IP 54 (BS EN 60529:1992)
<b>Dial Weight:</b>	203g (including pocket)
<b>Box Weight:</b>	42g
<b>Total Weight:</b>	245g
<b>Dial Dimensions:</b>	127 x 100mmØ
<b>Box Dimensions:</b>	130 x 105 x 105mm



Product Illustrated  
31/641/0



### Standard Product Reference Numbers

Range	Product No
-20 to 60°C&F	31/644/0
0 to 120°C&F	31/641/0
0 to 160°C&F	31/645/0

## 100mm Dial Thermometer - Direct Mounting - Back Entry, 100mm Stem

### Optional Product Specifications

- Range:** Customer to specify
- Class:** 1
- Case:** Stainless Steel
- Pocket:** Stainless Steel
- Sensor Mechanism:** Stainless Steel
- Connection:** Other sizes/materials inc. NPT
- Filling:** Glycerine (with Stainless Steel case)
- Logos:** Available (quantity dependent)

Special products can be supplied to order. Quantities required will affect unit price and initial leadtime may be extended.

